



OCTOBER 2024

THE COMMISSIONER'S

CORNER



Upcoming Dates

- **NARUC Annual Meeting** - November 9 - 14, 2024
- **Issaquena County Board of Supervisors Visit** - November 18, 2024
- **Central District Swearing-In Ceremony** - November 19, 2024
- **Mississippi Broadband Association Winter Broadband Summit** - December 3, 2024

Check out these upcoming dates to stay current on everything Commissioner Stamps is doing!

Entergy Awards \$2 Million Grant to Jackson State University

Entergy has awarded a \$2 million grant to Jackson State University as part of its Critical Power Grid Network Security initiative. This funding will support advancements in energy security and innovation within the community. Commissioner Stamps, who attended the event, expressed his support for the initiative, saying, "It's an honor to be part of this impactful moment for our community." Congratulations to the JSU Tigers on this achievement, which will help shape the future of energy security in Mississippi!

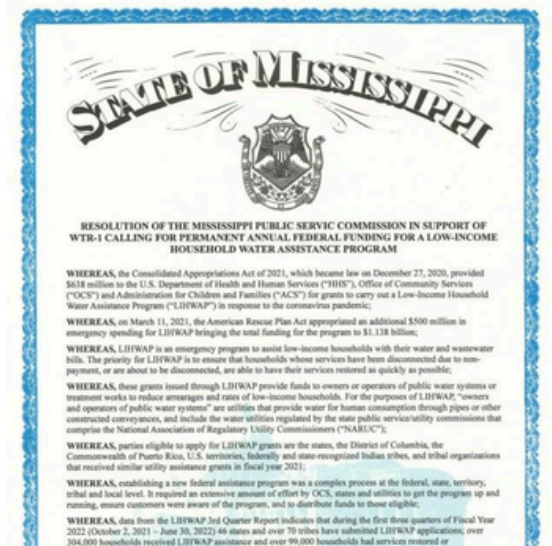


MPSC Passes Resolution Supporting Low-Income Water Assistance

The Mississippi Public Service Commission (MPSC) has approved a resolution backing the Low-Income Household Water Assistance Program (LIHWAP), aimed at helping low-income families pay their water and wastewater bills. The Commission is also urging Congress to establish permanent funding for a federal LIHWAP to ensure continuous support for families in need.

"Water is a basic human right," the Commissioner stated, pledging continued advocacy for policies that protect Mississippi communities and ensure access to clean, affordable water.

[Read More on our Facebook](#)



LIHWAP



Commissioner Stamps Joins Regulator's Roundtable at Evolve Convention

Commissioner Stamps participated in the Regulator's Roundtable Panel Discussion at the Evolve Convention, where he discussed how AI is enhancing grid reliability and managing utility costs.

The panel focused on balancing reliability, cost, and resilience through innovative management practices. Commissioner Stamps looks forward to seeing how these advancements will shape the future of utilities in Mississippi and beyond, supporting a stronger and more resilient energy infrastructure.



Jefferson County Board of Supervisors Meeting

In early October, Commissioner Stamps visited the Jefferson County Board of Supervisors to discuss fostering economic development in the region. The visit reinforced the Commissioner's commitment to strengthening Jefferson County and collaborating with local leaders to build a brighter future for the entire state of Mississippi.

This visit is part of ongoing efforts to drive growth and create new opportunities for residents in Jefferson County and beyond.

Capitol Police Department Opens New Headquarters in Downtown Jackson



On October 15, Commissioner Stamps attended the ribbon-cutting ceremony for the Capitol Police Department's new headquarters in downtown Jackson. This state-of-the-art facility now serves as the central base for Capitol Police, supporting their ongoing efforts to protect and serve the community.

The opening of this modern headquarters highlights the continued commitment to enhancing public safety in Jackson. The Commissioner remains dedicated to supporting the officers working tirelessly to ensure the safety and security of the city.

“

*Smart Choices,
Sustainable
Savings*



DID YOU KNOW?

Switching to energy-efficient appliances can significantly cut your energy usage. Look for the ENERGY STAR label when purchasing refrigerators, dishwashers, and washing machines. These certified appliances use less electricity and water, helping you save money and reduce your carbon footprint. Small changes can make a big difference!



Natural Gas Safety Tip of the Month

1. Smell gas? Leave immediately and call your gas company.
2. Regularly check appliances for leaks.
3. Install carbon monoxide detectors to monitor harmful gases.
4. Keep vents clear to ensure proper airflow.
5. Always hire a licensed professional for repairs.

Following these simple steps can help keep your home safe and prevent gas-related emergencies!

Mississippi Public Service Commission Hosts Nuclear Summit to Explore Energy Future

The Mississippi Public Service Commission hosted a Nuclear Summit, gathering industry experts, community leaders, and policymakers to explore how nuclear energy can meet the state's growing energy demands. The event focused on the potential of nuclear power to enhance grid reliability, provide cost-effective energy, and support sustainability efforts.

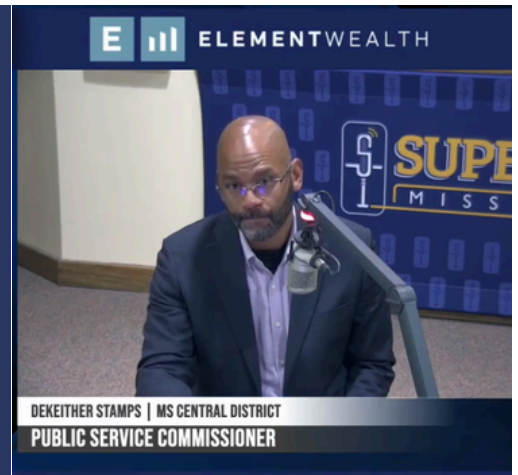
Nuclear energy offers numerous advantages, including zero carbon emissions and the ability to generate large-scale, consistent power. The summit also explored the economic benefits of nuclear power, such as job creation and long-term energy savings.

This forward-looking event emphasized the importance of nuclear power in supporting both Mississippi's economic growth and environmental sustainability. For more details, check out coverage from WLBT 3 On Your Side or [read more on our Facebook](#).

A MAN ON A MISSION

COMMISSIONER STAMPS DISCUSSES NUCLEAR ENERGY ON SUPERTALK MISSISSIPPI

Commissioner Stamps appeared on SuperTalk Mississippi's MidDays show with Gerard Gibert on 97.3FM. During the interview, he shared insights on Mississippi's nuclear energy future, discussing the potential benefits and opportunities it presents for the state. Catch the full interview clip to learn more about this exciting energy outlook for Mississippi!



COMMISSIONER STAMPS ATTENDS BREAST CANCER AWARENESS PARADE

Commissioner Stamps participated in a Breast Cancer Awareness Parade in Crystal Springs, showing his support for the cause and the local community. The event brought together residents to raise awareness and honor those affected by breast cancer. Commissioner Stamps was proud to stand with the community in support of this important cause, highlighting the ongoing efforts to promote awareness and education around breast cancer prevention and treatment.

COMMISSIONER STAMPS TOURS BEAN PATH TECHNOLOGY DISTRICT

Commissioner Stamps had the privilege of a 1-on-1 tour of Dr. Nashlie Sephus's Bean Path Technology District in Jackson. This innovative hub transforms the local community by offering youth, seniors, and entrepreneurs cutting-edge opportunities. The district is a beacon of innovation and learning, from the tech-infused barn market to a hands-on maker space. Commissioner Stamps praised the initiative for its focus on bridging the digital divide and empowering local talent, noting its potential to create a lasting, generational impact throughout Mississippi.

